

# NICR

NCDEX Group Company

Weekly Monsoon Report  
August 29, 2022



# Monsoon 2022

## Progress of Monsoon 2022

According to the India Meteorological Department, the monsoon trough at mean sea level runs close to foothills of the Himalayas. A Cyclonic Circulation lies over East Uttar Pradesh and another over east Jharkhand in lower tropospheric levels. A north-south trough runs from East Vidarbha to South Coastal Andhra Pradesh in lower tropospheric levels. A trough runs from central parts of north Andaman Sea to south Tamil Nadu at 3.1 km above mean sea level.

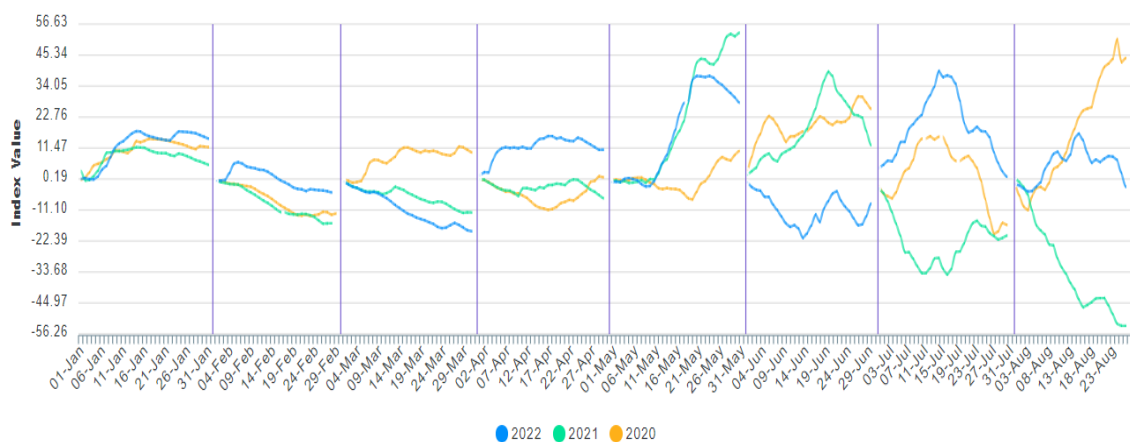
### Monsoon Forecast for the week of 29<sup>th</sup> August to 2<sup>nd</sup> September 2022

- According to the IMD, fairly widespread to moderate rainfall with isolated heavy falls and thunderstorm/lightning very likely over Nagaland, Manipur, Mizoram & Tripura on 29th August; 01st & 02nd September and over Arunachal Pradesh and Assam & Meghalaya during next 5 days.
- Isolated very heavy rainfall also likely over Arunachal Pradesh and Assam & Meghalaya on 31st August; 01st & 02nd September, 2022.
- Fairly widespread to moderate rainfall with isolated heavy falls and thunderstorm/lightning very likely over Bihar and East Uttar Pradesh on 29th August and over Sub Himalayan West Bengal & Sikkim during next 5 days. Isolated very heavy rainfall also likely over Sub-Himalayan West Bengal & Sikkim during 30th August - 02nd September, 2022.
- Fairly widespread to moderate rainfall with isolated heavy falls and thunderstorm/lightning very likely over Himachal Pradesh and Uttarakhand on 29th August, 2022.
- Fairly widespread to moderate rainfall with isolated heavy falls and thunderstorm/lightning very likely over North Interior Karnataka on 29th & 30th August and 02nd September; Telangana and Rayalaseema on 29th & 30<sup>th</sup> August; Coastal Andhra Pradesh on 29<sup>th</sup> August; South Interior Karnataka during 29th-31<sup>st</sup> August and over Tamil Nadu, Kerala & Mahe and Coastal Karnataka during next 5 days.

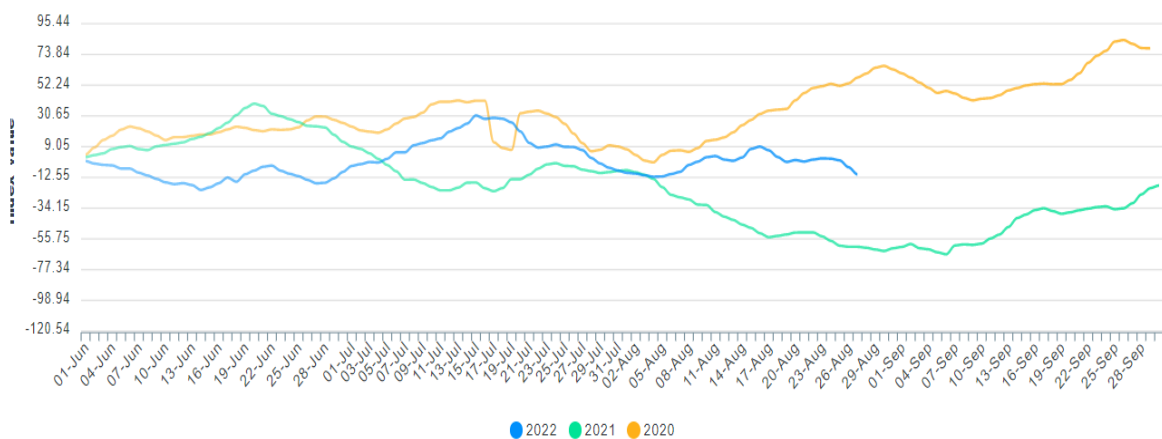
## NCDEX Weather Indices

NCDEX Weather Indices Weather indices are based on the occurrence of a weather event. The underlying assumption is that certain weather events such as flood / drought are correlated with crop losses and are therefore income risks. The key advantages to this kind of indices are that the trigger events e.g. deficit rainfall can be independently verified and therefore not subject to the possibilities of manipulation. These indices capture the deviation in rainfall from normal value. NCDEX Rainfall Indices, India's first nation-wide rainfall performance indicators. Indian Monsoon Index tracks the monsoon for the period of 1st June to 30th September every year and Indian Rain Index which tracks the month wise performance of the rainfall across the country. Indian Monsoon Index are calculated for the monsoon period i.e. from 1st June to 30th September every year. On 1st of June every year the index will be reset to zero.

### Indian Rain Index



### Indian Monsoon Index



## Outlook for Rainfall

### 5 Day Rainfall Forecast (MORNING)

29-August-2022

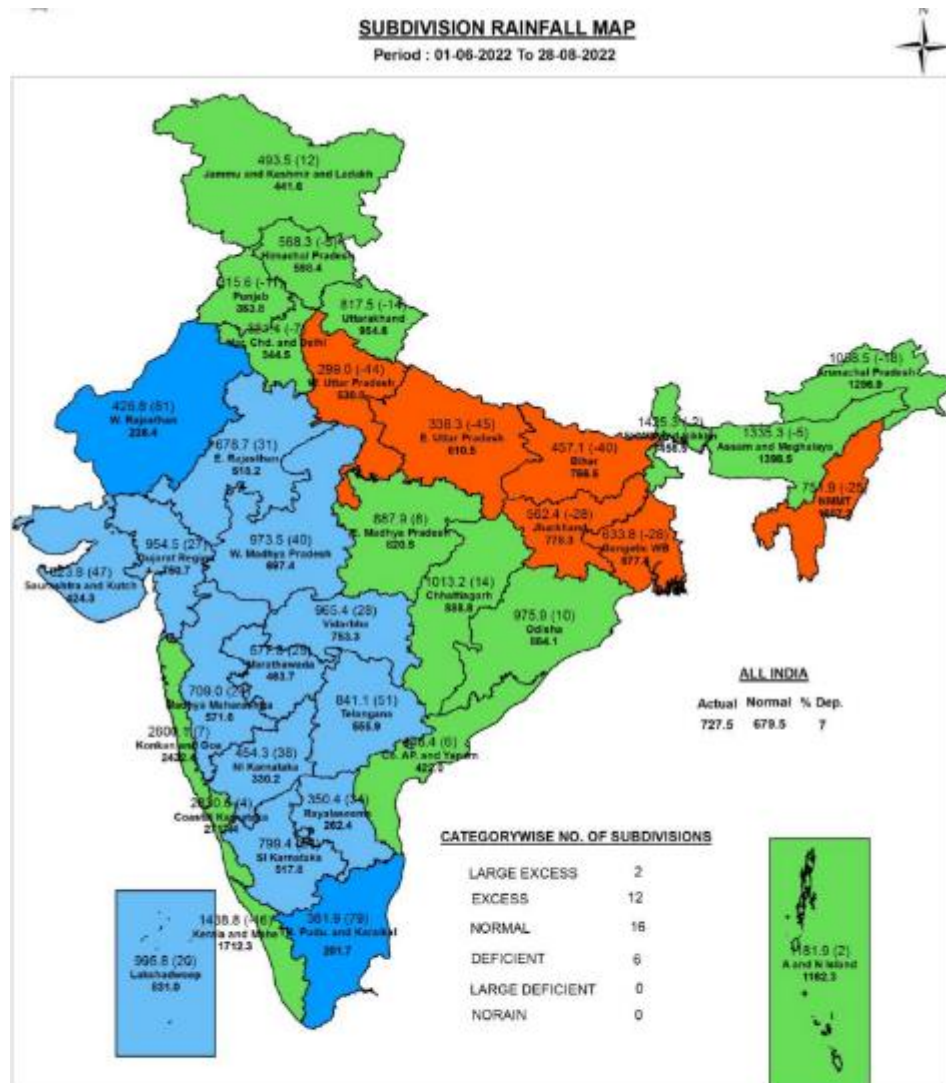
Met-Sub-Division	29-Aug Today	30Aug Tue	31Aug Wed	01Sep Thu	02Sep Fri
1. Andaman & Nicobar Islands	FWS	FWS	FWS	FWS	FWS
2. Arunachal Pradesh	FWS	FWS	WS	WS	WS
3. Assam & Meghalaya	FWS	FWS	WS	WS	WS
4. N. M. M. & T.	FWS	FWS	FWS	WS	WS
5. S.H. West Bengal & Sikkim	WS	WS	WS	WS	WS
6. Gangetic West Bengal	ISOL	ISOL	SCT	FWS	FWS
7. Odisha	ISOL	ISOL	SCT	SCT	SCT
8. Jharkhand	SCT	SCT	FWS	WS	WS
9. Bihar	FWS	SCT	FWS	FWS	FWS
10. East Uttar Pradesh	FWS	FWS	SCT	SCT	SCT
11. West Uttar Pradesh	ISOL	ISOL	ISOL	ISOL	ISOL
12. Uttarakhand	FWS	SCT	SCT	SCT	SCT
13. Haryana, Chd & Delhi	ISOL	ISOL	ISOL	ISOL	ISOL
14. Punjab	SCT	ISOL	ISOL	ISOL	ISOL
15. Himachal Pradesh	FWS	SCT	ISOL	ISOL	ISOL
16. J & K and Ladakh	SCT	SCT	ISOL	ISOL	ISOL
17. West Rajasthan	DRY	DRY	ISOL	ISOL	ISOL
18. East Rajasthan	ISOL	ISOL	ISOL	SCT	SCT
19. West Madhya Pradesh	ISOL	SCT	SCT	SCT	SCT
20. East Madhya Pradesh	FWS	SCT	SCT	SCT	SCT
21. Gujarat Region	ISOL	ISOL	ISOL	ISOL	ISOL
22. Saurashtra & Kutch	DRY	DRY	DRY	DRY	DRY
23. Konkan & Goa	SCT	FWS	FWS	FWS	FWS
24. Madhya Maharashtra	ISOL	SCT	SCT	SCT	SCT
25. Marathwada	ISOL	SCT	SCT	ISOL	ISOL
26. Vidharbha	FWS	SCT	SCT	SCT	SCT
27. Chhattisgarh	FWS	SCT	SCT	SCT	SCT
28. Coastal A. P. & Yanam	FWS	SCT	SCT	ISOL	ISOL
29. Telangana	FWS	FWS	SCT	FWS	FWS
30. Rayalaseema	WS	FWS	SCT	SCT	SCT
31. T.N., Puducherry & Karaikal	FWS	FWS	FWS	FWS	FWS
32. Coastal Karnataka	WS	WS	WS	WS	WS
33. North Interior Karnataka	WS	WS	WS	FWS	FWS
34. South Interior Karnataka	WS	WS	WS	WS	WS
35. Kerala & Mahe	WS	WS	WS	WS	WS
36. Lakshadweep	WS	WS	WS	WS	WS

#### % Station Reporting Rainfall

% Stations	Category	% Stations	Category
76-100	Widespread (WS/ Most Places)	26-50	Scattered (SCT/ A Few Places)
51-75	Fairly Widespread (FWS/ Many Places)	1-25	Isolated (ISOL)
No Rain	Dry		

Source: IMD, New Delhi

## Subdivision wise Cumulative Rainfall (as on 28 August 2022)

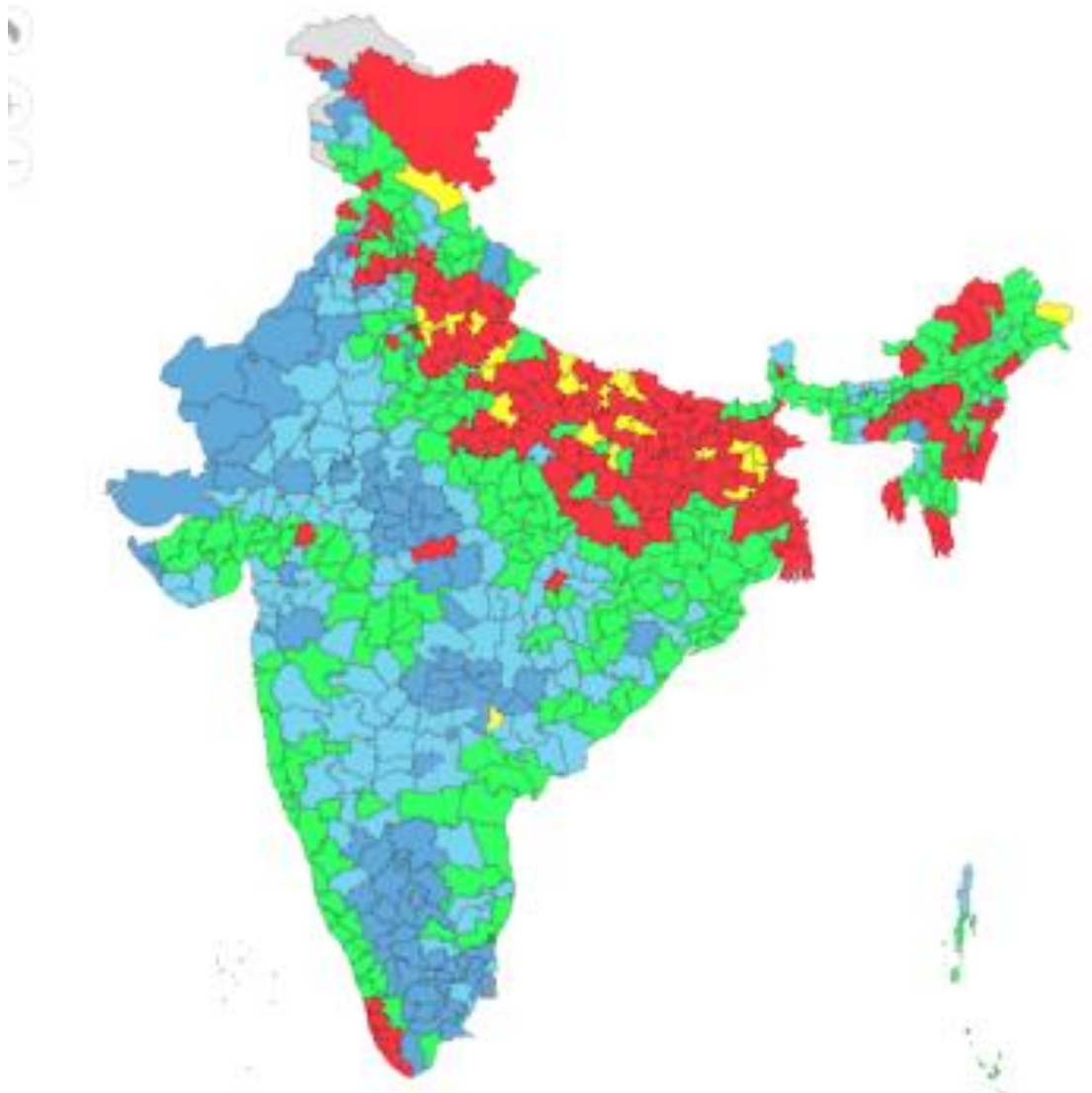


**Legend**  
■ Large Excess [ 60% or more ] ■ Excess [ 20% to 59% ] ■ Normal [-19% to 19%] ■ Deficient [-59% to -20%] ■ Large Deficient [-60% to -40%] ■ No Rain [-100%] ■ No Data

**NOTES :**  
 a) Rainfall figures are based on operation data.  
 b) Small figures indicate actual rainfall (mm), while bold figures indicate Normal rainfall (mm).  
 c) Percentage Departures of rainfall are shown in brackets.

Source: IMD, New Delhi

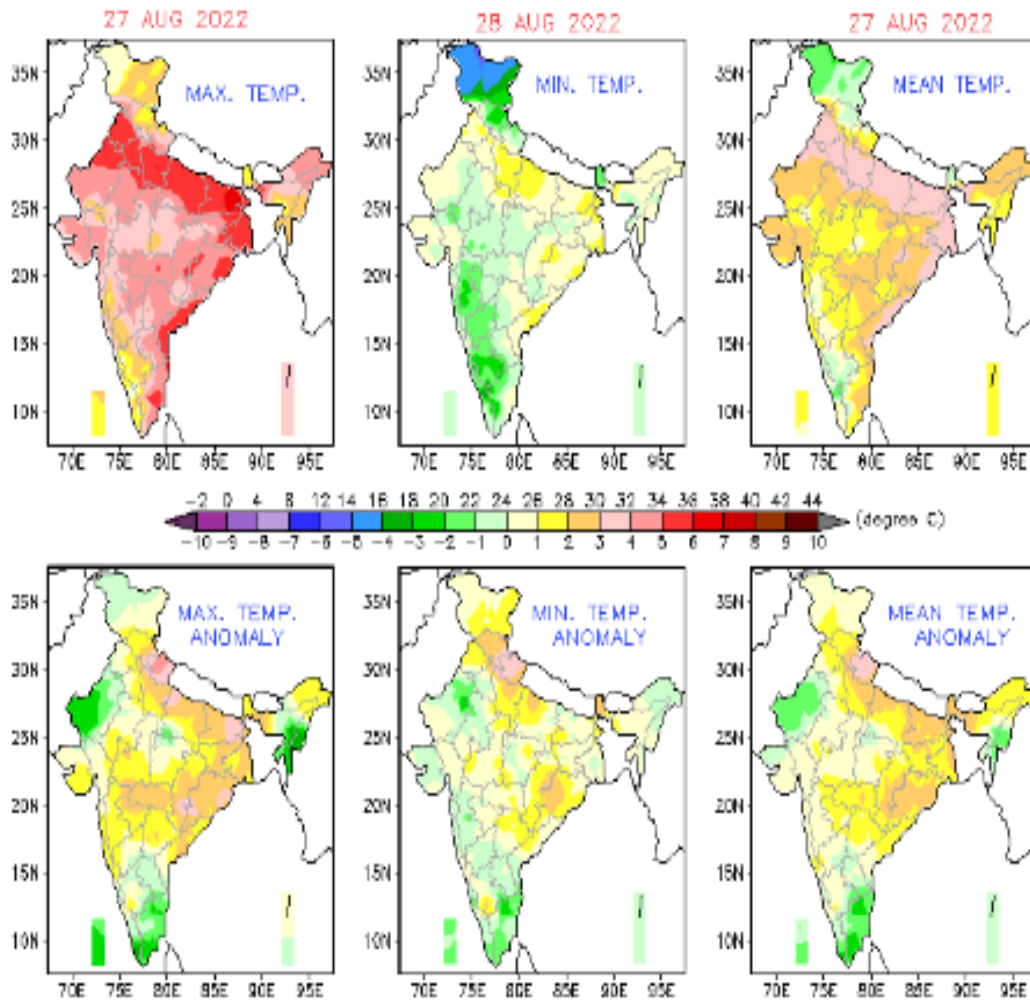
## District wise Cumulative Rainfall (as on 28 August 2022)



Source: IMD, New Delhi

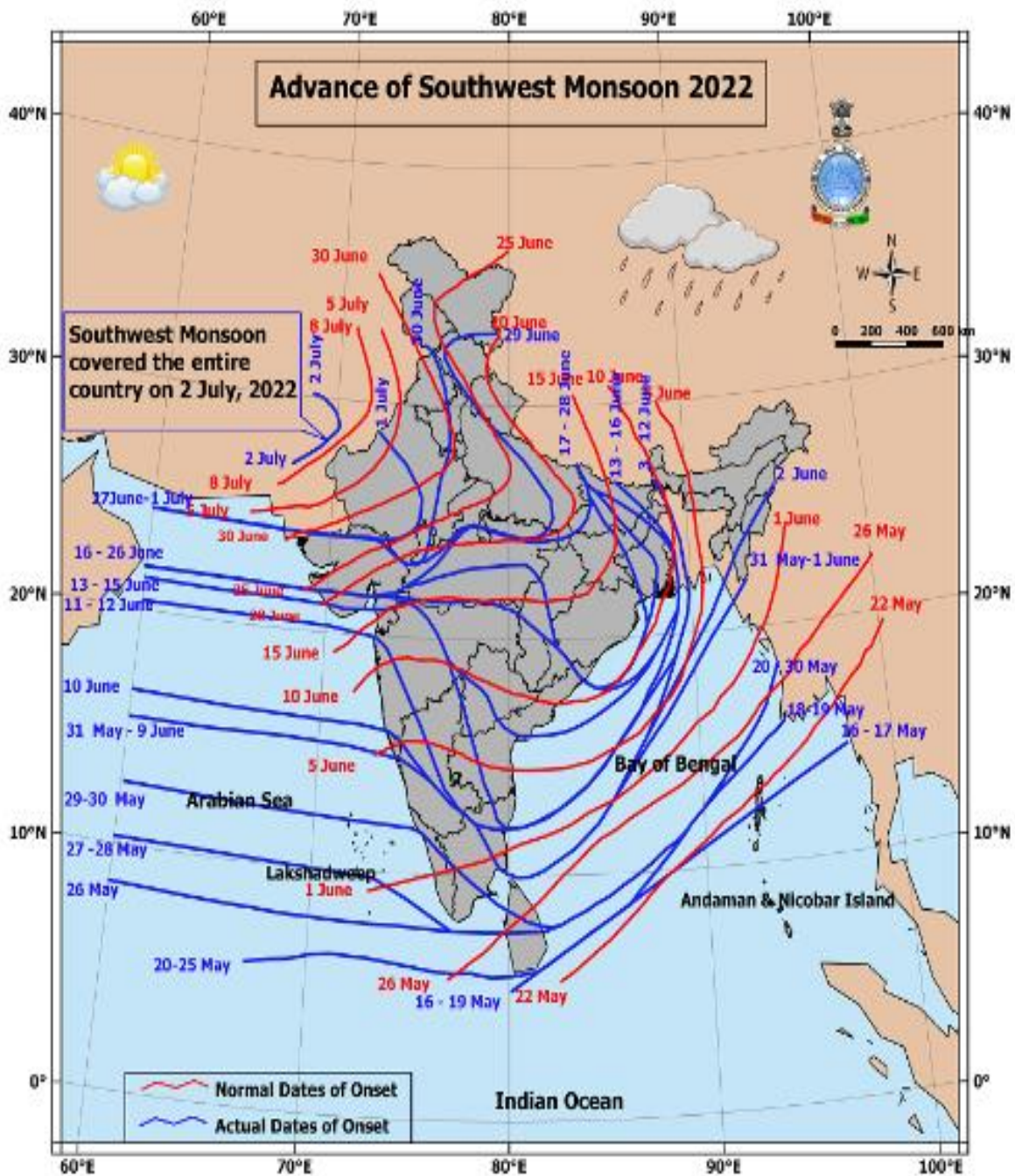


## Actual Temperature



Source: IMD, New Delhi

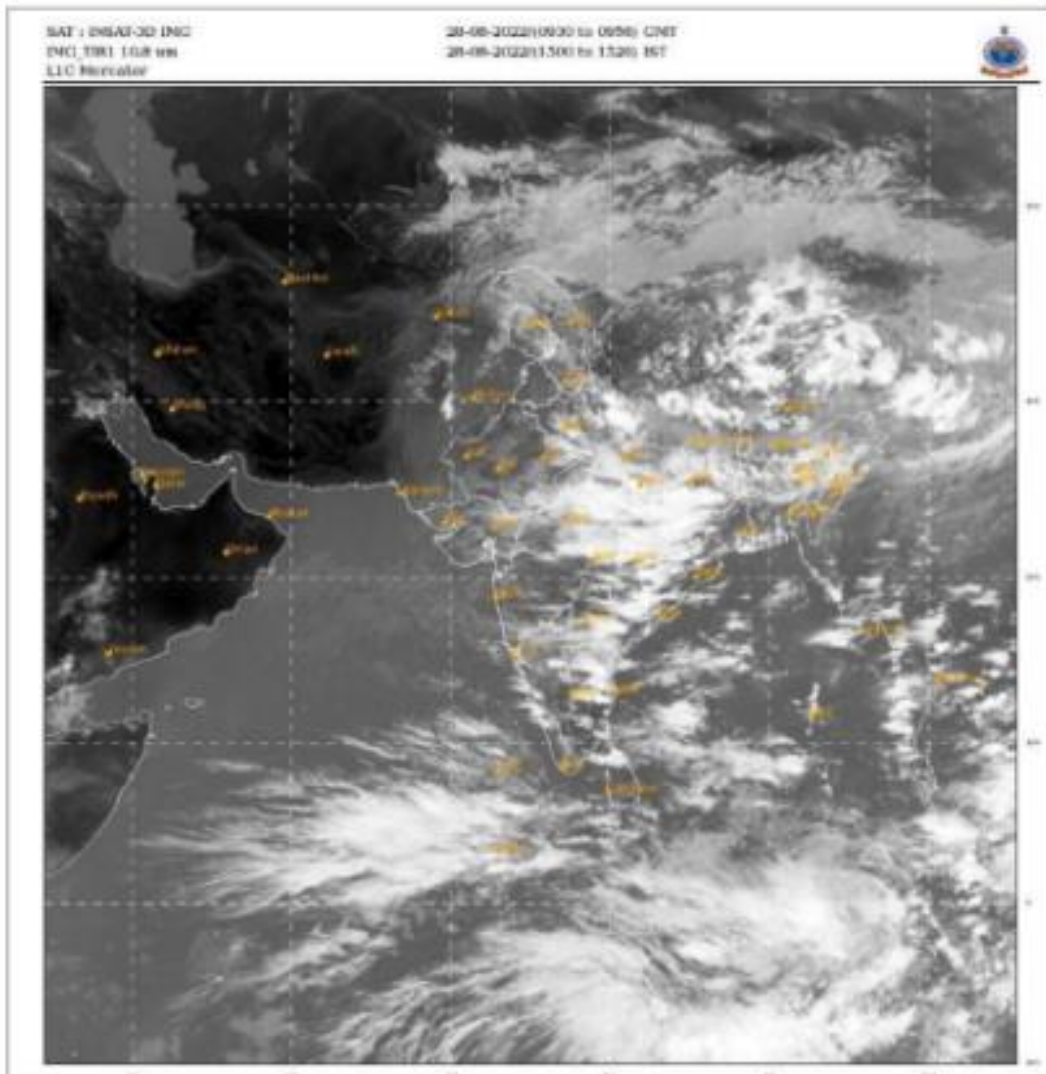
## Advancement of Monsoon 2022



Source: IMD, New Delhi



## Cloud Status



Source: IMD, New Delhi

## Kharif Crop Sowing Progress

As per the preliminary reports published by the Ministry of Agriculture and Farmer Welfare (MoAFW), the total sown area as on 26 August, total acreage is down by 4.9% in pulses, up by 4.1% in cereals, and down by 1.13% in oilseeds and up by 6.54% for cotton as compared to the sown area seen during same period of last year. However, these are very preliminary figures and may change considerably once the sowing starts in full swing in the northern parts of the country.

As on 26 August 2022, status of crops sowing:

(in Lakh hectare)

S.NO.	CROPS	Area Sown	Area Sown	Net change	% change
		2022	2021	2021	2021
<b>1</b>	<b>Total Pulses</b>	<b>127.71</b>	<b>134.37</b>	<b>-6.66</b>	<b>-4.96</b>
(i)	Arhar	44.07	47.20	-3.13	-6.64
(ii)	Kulthi	0.22	0.45	-0.24	-52.14
(iii)	Urad	36.15	37.91	-1.77	-4.66
(iv)	Moong	32.69	34.14	-1.45	-4.24
(v)	Other Pulses	14.58	14.66	-0.08	-0.54
<b>2</b>	<b>Total Coarse Cereals</b>	<b>176.33</b>	<b>169.39</b>	<b>6.94</b>	<b>4.10</b>
(i)	Jowar	13.71	14.33	-0.62	-4.32
(ii)	Bajra	70.12	63.19	6.94	10.98
(iii)	Ragi	6.22	7.73	-1.50	-19.46
(iv)	Maize	80.85	79.06	1.80	2.28
(v)	Small Millets	5.42	5.09	0.33	6.44
<b>3</b>	<b>Total Oilseeds</b>	<b>186.48</b>	<b>188.62</b>	<b>-2.14</b>	<b>-1.13</b>
(i)	Groundnut	44.75	48.35	-3.59	-7.44
(ii)	Sunflower	1.86	1.44	0.42	29.31
(iii)	Sesamum	12.69	12.65	0.04	0.30
(iv)	Niger	0.71	0.36	0.35	97.34
(v)	Castor	6.52	5.16	1.36	26.28
(vi)	Soyabean	119.83	120.55	-0.72	-0.60
(vii)	Other Oilseeds	0.12	0.11	0.02	14.33
<b>4</b>	Total Jute and Mesta	7.00	7.00	0	-0.03
<b>5</b>	Cotton	124.55	116.91	7.64	6.54

Source: Ministry of Agriculture.

---

Learn more about NCDEX Institute of Commodity Markets and Research (NICR) at: <http://www.nicrindia.in>

**Address for Communication:**

Avanta Business Center, 12th floor, Ambadeep Building, 14, KG Marg, New Delhi – 110001, India.

Free No: 1800 26 62339

Email: [admindelhi.nicr@ncdex.com](mailto:admindelhi.nicr@ncdex.com) ; [helpdesk.nicr@ncdex.com](mailto:helpdesk.nicr@ncdex.com)

**Registered Office:**

Akruti Corporate Park, 1st Floor, Near G.E.Garden, L.B.S. Marg, Kanjurmarg (West),

Mumbai - 400 078. India

Tel: +91-22-66406789; Fax: +91-22-66406899; Toll Free No: 1800 26 62339

Email: [askus@ncdex.com](mailto:askus@ncdex.com)

**Corporate Identity No.** (CIN) of NICR is U74900MH2007NPLC174229.

## Disclaimer

---

This Report is for general information of the recipients. The views and opinions expressed in this document may or may not match the views of the reader. It does not constitute a personal recommendation or take into account the particular investment objectives, financial situations, or other needs of the reader. This document is not intended to be and must not be taken as the basis for any investment decision. It should be noted that the information contained herein is from publicly available data or other sources believed to be reliable. We are not soliciting any action based upon this material. Neither NICR, nor any person connected with it, accepts any liability arising from the use of this document.